

PAPER SUBMISSION TITLE

SUBTITLE

AUTHOR NAMES ARE NOT TO BE INCLUDED IN THIS DOCUMENT FOR REVIEW BY THE SELECTION COMMITTEE

AFFILIATION AUTHOR ARE NOT TO BE INCLUDED IN THIS DOCUMENT FOR REVIEW BY THE SELECTION COMMITTEE

PAPER ABSTRACT: A short (200 word maximum) summary of this paper's primary theme, intent, and/or findings to help the reader quickly ascertain the paper's purpose. This template provides guidelines to format the paper submission. Please follow the instructions and pre-set formatting styles. Do not include author names and affiliations in proposal submission. Papers must be submitted only as .PDF. See below for details regarding formatting, submission logistics and general guidelines.

Keywords: List up to five primary words/theme words found within this paper, separated by commas.

1. INTRODUCTION

All paper proposals submitted for this program will be selected through a double-blind peer review process and should follow a clear outline, have been proofread and written in clear language. The following summarizes the proposal structure.

PLEASE DO NOT INCLUDE AUTHOR NAMES AND AFFILIATIONS IN PROPOSAL SUBMISSION.

The **abstract** should provide a brief summary identifying the purpose, problem, methods, results, and conclusion of the submitted work and omit any citing references. The **introduction** should cover a broader overview and framing of the research/case study in a greater context of the opportunity space. Define the problem statement, hypotheses, or research questions. A **literature review or market analysis** should identify an opportunity space as well as build on the shoulders of an existing body of work and/or research or theory. Applied **methods and processes** should describe the roadmap of the research and should be written in a format that guides the reader as well as makes the process replicable. The goal of this section is to explain the study to a broader audience. **Results** of research/case study should be discussed to provide an overview of the analysis of the process outcomes. The **discussions** of the results should be treated as the synthesis and interpretation of the research/case study outcomes. The **conclusion** of the paper should elicit the contribution and uniqueness of the outcomes and the greater application thereof, in addition it could include an outlook for next steps to be taken. **References** should be formatted in APA 7 style (please see examples).

Full paper proposals, in addition to full workshop proposals, will go through an additional round of judging evaluation.

2. LAYOUT OF THE PAPER & SUBMISSION GUIDELINES

This template provides guidelines to format your paper submission. Please follow these instructions and pre-set formatting styles. Papers submitted that do not adhere to the formatting details outlined (and demonstrated) in this document may not be accepted by the review committee.

The paper size is US Letter (8.5 x 11 in). The document margins are 1 inch. The standard font to be used for the IDSA paper submissions is Calibri. Preformatted text styles are included in this document.

For full papers: Minimum 4 pages, maximum 8 pages total (including abstract and images) plus references.

For work in progress: Minimum 2 pages, maximum 4 pages total (including abstract and images) plus references.

Paper title

For full papers, please name your PDF file: **Paper_**(Presentation Title).pdf.

For work in progress, please name your file: **WIP_**(Presentation Title).pdf.

Title maximum 40 characters (including spaces). If longer, your title will get cut short and will be hard to search. Images may be included in your .PDF submission. Additionally, (1) one .jpeg image will be uploaded through the online submission portal to be used as a 'thumbnail' image to represent your paper online if published. Pages are numbered in the footer as shown in this template. Please do not alter the page number or IDSA logo.

Only Adobe .PDF documents will be accepted in this call for papers. Papers must be submitted via the online submission form.

Please refer to <https://www.internationaldesignconference.com/> for important information about the International Design Conference and IDSA Education Symposium.

3. TEXT STYLES

The styles part of the 'Formatting Palette' contains predefined styles for each possible section of your Education Paper submission. Please do not alter header and footer of the paper.

All text is left aligned. The following list presents the components used and corresponding styles:

- The paper title is bold 20pt, all caps, line spacing exactly 13pt, aligned left. Style 'IDSA PAPER TITLE.'
- Abstract and keywords are italic, 9pt, line spacing exactly 14pt, align left. Style 'IDSA ABSTRACT.'
- The header is bold 12pt, all caps, single spacing, aligned left, space before 22,5pt, after 7,5pt. Style 'IDSA HEADING 1'.
- The subheading is 11pt in all caps, single spacing, aligned left. Style 'IDSA SUBHEADING.'
- Author is bold 9pt, all caps, aligned left (***note: Do not list authors for paper proposals***)
- Affiliation is 9pt, all caps, aligned left (***note: Do not list affiliations for paper proposals***)
- Body text is 11pt, line spacing exactly 14pt, aligned left. Style 'IDSA BODY.'
- Bullet lists are body text, hanging 0.2in, space before 5pt. Style 'IDSA PAPER bullet list.'
- Image Captions are italic, 8pt, line spacing exactly 10pt, aligned left. Style 'IDSA CAPTION.'
- References are 9pt, line spacing exactly 10pt, aligned left, space after 5pt. Style 'IDSA REFERENCES.'

4. SECTION HEADS

Section Header is bold 12pt, all caps, single spacing, aligned left, space before 22,5pt, after 7,5pt. Style 'IDSA HEADING 1'.

4.1 SUBSECTION HEAD

Subheading is 11pt all caps, single spacing, aligned left. Style 'IDSA SUBHEADING.'

5. FIGURES AND TABLES

Figures and tables can appear within the text, left aligned. Use 'IDSA IMAGE PLACEMENT'.

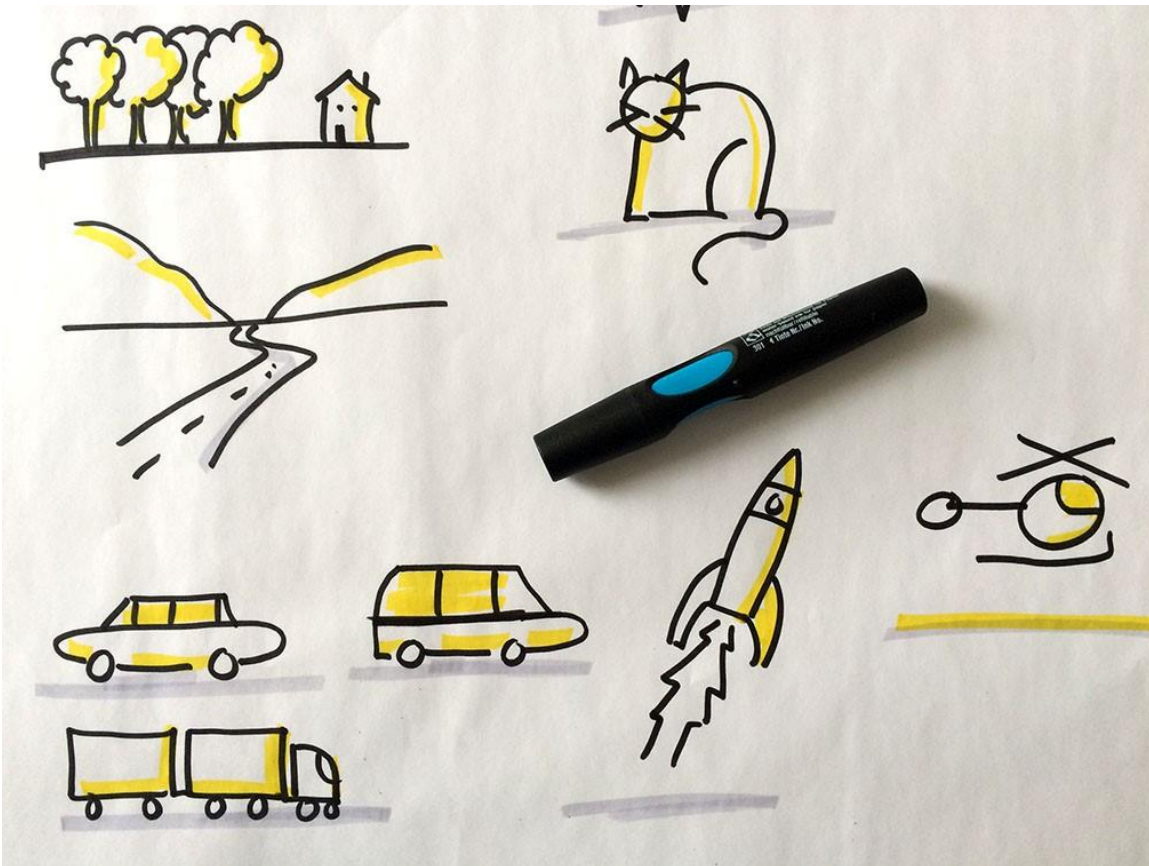


Figure 1. IDSA Caption. Visual example..

Captions go under the respective tables and figures. All figures and tables are aligned to the left of a page or column and appear either on the same page as the first reference to the figure or table or on the first page after the first reference. Captions use style 'IDSA CAPTION', text should succinctly describe the image.

6. CITATIONS AND REFERENCES

In the references section at the end, please include references to all works cited in the running text organized in alphabetical order. Do not include works that are not cited in the text. Formatting for citations and references should follow standard APA style. When citing a website, please enter the date you last viewed it, as the content may change.

Reference APA 7 style guide: www.apastyle.org and www.mendeley.com/guides/apa-citation-guide

7. REFERENCES

Please use APA 7 style, see examples below: 1. Journal, 2. Book, 3. Website, 4. Dictionary, 5. YouTube video, 6. Author journal article, 7. Author conference paper.

Hortin, J. A. (1984). Visual literacy and visual thinking. In L. Burbank, & D. Pett (Eds.) Contributions to the study of visual literacy. IVLA.

Kelley, T., & Kelley, D. (2013). Creative confidence, unleashing the creative potential within us. Crown Business

Lamm, E. (2020). Workshops. Eva-Lotta Lamm. <https://www.evalotta.net/workshop-visualthinking>

Merriam-Webster. (n.d.). Communication. In Merriam-Webster.com dictionary. Retrieved October 13, 2020, from <https://www.merriam->

Smith, R. (2012, August 31). Drawing in class: Rachel Smith at TEDxUFM [Video]. YouTube.

<https://www.youtube.com/watch?v=3tJPeumHNLY>

Author (2020). Journal article.

Author (2020). Conference paper.